

Pre Rigging



Pre Rigging kit examples

Pre Rigging kits: 2 gauge kit example

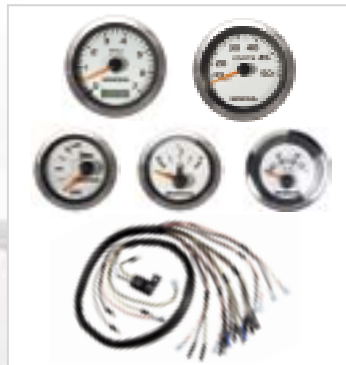


- Pre Rigging Basic 2 gauge kit
 - 2 basic gauges
 - 1x gauge harness



- Pre Rigging Side Mounted Control Box Kit
 - 1x Side Mount RC Box
 - Main wire harness with integrated PGM-Fi cord 6.1M, 7.6M, 9M & 15M harnesses available

Pre Rigging kits: 5 gauge kit example



- Pre Rigging 5 gauge kit
 - 1x 5 gauge kit
 - 1x gauge harness



- Pre Rigging Single Top Mount Control Box Kit
 - 1x RC Box
 - Main wire harness with integrated PGM-Fi cord – 7.6M.
 - 1x Switch Panel

Pre Rigging



Pre Rigging kit examples

Pre Rigging kits: 5 gauge kit example



- Pre Rigging 5 gauge kit
 - 1x 5 gauge kit
 - 1x gauge harness



- Pre Rigging Flush Mount Control Box Kit
 - 1x Flush RC Box
 - Main wire harness with integrated PGM-Fi cord – 7.6M
 - 1x Switch Panels

Pre Rigging kits: Single digital gauge kit example



- Pre Rigging Digital gauge kit
 - 1x Tachometer
 - 1x Tachometer harness
- Dual Kit (Tachometer/Speedo) also available
All kits inc harnesses (Pitot tube with Speedo)



- Pre Rigging Side Mount Control Box kit
 - RC Box
 - Main wire harness with integrated PGM-Fi cord 6.1M, 7.6M, 9M & 15M harnesses available

Pre Rigging



Pre Rigging kit examples

Pre Rigging kits: Twin digital gauge kit example



- Pre Rigging Twin Digital Gauge Kit
 - 2x Tachometers
 - 1x Speedometer
 - 2x gauge harness
 - All inc harnesses (Pitot Tube with Speedo)



- Pre Rigging Dual Top Mount Control Box Kit
 - 1x Dual RC Box
 - 2x Main wire harness with integrated PGM-Fi cord – 7.6M.
 - 2x Switch Panels
 - 1 Dual Tie Bar



Pre Rigging



Remote control kit

Side mount remote control kit PTT

06480-ZZ5-600

- Key start/PTT/Emergency stop switches, 4 light control panel (Oil pressure/Overheat/PGM-Fi & ACG Alert), Port or starboard mounting, can be mounted in pairs
- Supplied with 6.1M (20 feet) Main wire harness with integrated PGM-Fi indicator cord

*Application: BF40/50D, BF60A/BFP60A
BF75DK0 from serial no BBAJ-1004819
BF90DK0 from serial no BBCJ-1014203
BF175/200/225AK1*



Side mount remote control kit PTT

06480-ZZ5-700

- Key start/PTT/Emergency stop switches, 4 light control panel (Oil pressure/Overheat/PGM-Fi & ACG Alert), Port or starboard mounting, can be mounted in pairs
- Supplied with 7.6M (25 feet) Main wire harness with integrated PGM-Fi indicator cord

*Application: BF40/50D, BF60A/BFP60A
BF75DK0 from serial no BBAJ-1004819
BF90DK0 from serial no BBCJ-1014203
BF175/200/225AK1*



Side mount remote control kit PTT 200

06480-ZZ5-800

- Key start/PTT/Emergency stop switches, 4 light control panel (Oil pressure/Overheat/PGM-Fi & ACG Alert), Port or starboard mounting, can be mounted in pairs
- Supplied with 9.0M (30 feet) Main wire harness with integrated PGM-Fi indicator cord

*Application: BF40/50D, BF60A/BFP60A
BF75DK0 from serial no BBAJ-1004819
BF90DK0 from serial no BBCJ-1014203
BF175/200/225AK1*



Side mount remote control kit PTT 200

06480-ZZ5-900

- Key start/PTT/Emergency stop switches, 4 light control panel (Oil pressure/Overheat/PGM-Fi & ACG Alert), Port or starboard mounting, can be mounted in pairs
- Supplied with 15M (50 feet) Main wire harness with integrated PGM-Fi indicator cord

*Application: BF40/50D, BF60A/BFP60A
BF75DK0 from serial no BBAJ-1004819
BF90DK0 from serial no BBCJ-1014203
BF175/200/225AK1*



Pre Rigging



Remote control kit

Remote control top mount single PGM-Fi

06250-ZW5-U40HE

- Kit contains:
 - Remote control 06240-ZW5-U40
 - 2 Light switch panel kit 06323-ZW5-643Suitable for analogue and digital gauges

*Application: BF75DK0 to serial no BBAJ-1004818
BF90DK0 to serial no BBCJ-1014202
BF115/135/150A
BF175/200/225A6*



Remote control top mount dual PGM-Fi

06250-ZW5-U60HE

- Kit contains:
 - Remote control: 06240-ZW5-U60
 - 2 Light switch panel kit: 06323-ZW5-753
 - Dual engine tie bar: 53520-ZY3-U00HESuitable for analogue and digital gauges

*Application: BF75DK0 to serial no BBAJ-1004818
BF90DK0 to serial no BBCJ-1014202
BF115/135/150A
BF175/200/225A6*



Remote control flush mount PGM-Fi

06250-ZW5-U70HE

- Kit contains:
 - Remote control 06240-ZW7-U00
 - 2 Switch panel kit 06323-ZW5-643Suitable for analogue and digital gauges

*Application: BF75DK0 to serial no BBAJ-1004818
BF90DK0 to serial no BBCJ-1014202
BF115/135/150A
BF175/200/225A6*



Remote control top mount single PGM-Fi (left)

06270-ZW5-U00HE

- Kit contains:
 - Remote control 06240-ZW5-U50
 - 2 Light switch panel kit 06323-ZW5-643Suitable for analogue and digital gauges

*Application: BF75DK0 to serial no BBAJ-1004818
BF90DK0 to serial no BBCJ-1014202
BF115/135/150A
BF175/200/225A6*



Pre Rigging



Remote control kit

Remote control flush mount single PGM-Fi (left)

06270-ZW5-U10HE

- Kit contains:
 - Remote control 06240-ZW5-U10
 - 2 Light switch panel kit 06323-ZW5-643
- Suitable for analogue and digital gauges

*Application: BF75DK0 to serial no BBAJ-1004818
BF90DK0 to serial no BBCJ-1014202
BF115/135/150A
BF175/200/225A6*



Remote control top mount dual PGM-Fi (left)

06270-ZW5-U20HE

- Kit contains:
 - Remote control 06240-ZW5-U70
 - 2 Light switch panel kit 06323-ZW5-753
 - Dual engine tie bar 53520-ZY3-U00HE
- Suitable for analogue and digital gauges

*Application: BF75DK0 to serial no BBAJ-1004818
BF90DK0 to serial no BBCJ-1014202
BF115/135/150A
BF175/200/225A6*



Remote control top mount single PGM-Fi

06250-ZZ5-U01HE

- Kit contains:
 - Remote Control
 - 4 light Switch panel
 - Harness 7.6M main wire harness with integrated PGM-Fi indicator cord

*Application: BF40/50D, BF60A/BFP60A
BF75DK0 from serial no BBAJ-1004819
BF90DK0 from serial no BBCJ-1014203
BF175/200/225AK1*



Remote control flush mount single PGM-Fi

06250-ZZ5-U11HE

- Kit contains:
 - Remote Control
 - 4 light Switch panel
 - Harness 7.6M main wire harness with integrated PGM-Fi indicator cord

*Application: BF40/50D, BF60A/BFP60A
BF75DK0 from serial no BBAJ-1004819
BF90DK0 from serial no BBCJ-1014203
BF175/200/225AK1*



Pre Rigging



Remote control kit

Remote control top mount dual PGM-Fi

200

06250-ZZ5-U21HE

- Kit contains:
 - Remote Control
 - 4 light Switch panel
 - 2x Harness 7.6M main wire harness with integrated PGM-Fi indicator cord
 - Dual engine tie bar

*Application: BF40/50D, BF60A/BFP60A
BF75DK0 from serial no BBAJ-1004819
BF90DK0 from serial no BBCJ-1014203
BF175/200/225AK1*



Remote control top mount single PGM-Fi (left)

06255-ZZ5-U01HE

- Kit contains:
 - Remote Control
 - 4 light Switch panel
 - Harness 7.6M main wire harness with integrated PGM-Fi indicator cord

*Application: BF40/50D, BF60A/BFP60A
BF75DK0 from serial no BBAJ-1004819
BF90DK0 from serial no BBCJ-1014203
BF175/200/225AK1*



Remote control flush mount single PGM-Fi (left)

200

06255-ZZ5-U11HE

- Kit contains:
 - Remote Control
 - 4 light Switch panel
 - Harness 7.6M main wire harness with integrated PGM-Fi indicator cord

*Application: BF40/50D, BF60A/BFP60A
BF75DK0 from serial no BBAJ-1004819
BF90DK0 from serial no BBCJ-1014203
BF175/200/225AK1*



Remote control top mount dual PGM-Fi (left)

06255-ZZ5-U21HE

- Kit contains:
 - Remote Control
 - 4 light Switch panel
 - Harness 7.6M main wire harness with integrated PGM-Fi indicator cord

*Application: BF40/50D, BF60A/BFP60A
BF75DK0 from serial no BBAJ-1004819
BF90DK0 from serial no BBCJ-1014203
BF175/200/225AK1*



Pre Rigging



Hose kit

Rigging hose kit

06177-ZY3-U00HE

- Kit contains:
 - 1.5M long grey hose 50MM Ø
 - 1 boat fitting and 2 Rilsan collar

Application: BF60 to BF225



Grey hose 10M extension

06177-ZY3-U10HE

Application: BF60 to BF225



Boat fitting

200

200

06177-ZY3-U80HE

- Kit contains:
 - 5 boat fittings

Application: BF60 to BF225



Pre Rigging



Steering plate kit

Steering plate kit

06234-ZW1-000HE

- Kit contains:
 - Steering plate 53234-ZW1-010
 - 90109-ZV5-000 bolt studs 2x10x28
 - 90306-ZV5-003 nuts 10MM

Application: BF75/90



Steering plate kit

06234-ZW5-000HE

- Kit contains:
 - Steering plate 53234-ZW5-010
 - 90109-ZV5-000 bolt studs 2x10x28
 - 90306-ZV5-003 nuts 10MM

Application: BF115/130





Remote control grommet for hose kits

Grommet

32168-ZW1-000AH

- For tiller handle models

Application: BF75 / BF90A



Grommet

40105-ZZ3-A00

- For tiller handle models

Application: BF60 / BFP60A



Grommet for hose kits of Ø 50MM

40105-ZZ3-000

- For remote control models

Application: BF60 / BFP60A



Grommet for hose kits of Ø 50MM

40105-ZY9-000

- For remote control models

Application: BF75 / BF90DK0



Pre Rigging



Remote control grommet for hose kits

Grommet

40105-ZY9-A00

- For tiller handle models

Application: BF75/90DK0



Grommet for hose kits of Ø 50MM

40106-ZW7-U00

Application: BF115A to BF150A



Grommet for hose kits of Ø 50MM

40105-ZY3-000

Application: BF175 to BD225 A2/A6



Grommet for hose kits of Ø 50MM

40105-ZY3-C00

Application: BF175 to BF225AK1



Pre Rigging



Digital gauges and complementary part

Digital Speedometer with fuel management

06373-ZY3-811

- Speed LCD 5-120 km/h, 3-75 mph, 3-65 knots
- Fuel level LCD 8 bars
- Volt LCD 10.0 – 16.0 V
- Trip LCD 999,9 km/mile
- Fuel management
 - Fuel flow LCD 2.0 – 999.9 (L/H), 0.5-75.0 GHP
 - Fuel economy LCD max 999.9 km/l, MPG
 - Fuel integration LCD max 999.9 L, G
 - Water in fuel LCD alarm segment



Application: BF40D to BF225AK1

Digital Tachometer

06375-ZY3-812

- Tacho LCD max 999 (x 12 rpm)
- Trim LCD 13 bars
- Hour LCD max 9999 hours
- Overheat warning LCD alarm segment
- Oil pressure warning LCD alarm segment
- ACG warning LCD alarm segment
- PGM-F1 Warning LCD alarm segment



Application: BF40D to BF225AK1

Meter harness kit

06326-ZY3-802

- Kit contains:
 - Meter harness A 32540-ZY3-800
 - Indicator panel cable 32185-ZY6-000
- To be used with digital speedometer kit 06373-ZY3-810



Application: BF40D to BF225AK1

Pitot tube for digital speedometer

37202-ZW5-U01

- 8M long
- Black PVC tube with inner \varnothing 4MM and outer \varnothing 7MM



Pre Rigging



Digital gauges and complementary parts

Digital gauges (Virtual kit)

200

200

06373-ZY3-505

- Kit contains
 - Digital Speedometer with Fuel management
 - Digital Tachometer
 - Meter harness
 - Speedometer water tube



Application: BF40D to BF225

Digital gauge (Virtual tacho kit)

06375-ZY3-405

- Kit contains
 - Digital tachometer
 - Meter Harness



Application: BF40D to BF225

'20 Main wire harness (length 6.1M)

32205-ZY6-020AH

- 6.1M (20 feet) Main Wire harness with 14 & 6 wire connectors at engine side.
- Both 6 & 3 pin connectors at helm side
- Integrated PGM-Fi indicator cord



Application: BF40D to BF225

'25 Main wire harness (length 7.6M)

32205-ZY6-025AH

- 7.6M (25 feet) Main Wire harness with 14 & 6 wire connectors at engine side.
- Both 6 & 3 pin connectors at helm side
- Integrated PGM-Fi indicator cord



Application: BF40D to BF225

Pre Rigging



Digital gauges and complementary parts

'30 Main wire harness (length 9.1M)

32205-ZY6-030AH

- 9.1M (30 feet) Main Wire harness with 14 & 6 wire connectors at engine side.
- Both 6 & 3 pin connectors at helm side
- Integrated PGM-Fi indicator cord



Application: BF40D to BF225

'50 Main wire harness (length 15M)

32205-ZY6-050AH

- 15M (50 feet) Main Wire harness with 14 & 6 wire connectors at engine side.
- Both 6 & 3 pin connectors at helm side
- Integrated PGM-Fi indicator cord



Application: BF40D to BF225



Pre Rigging



Digital gauges and complementary parts

9 Wire panel indicator harness (6.1M)

32185-ZY6-020AH

- Engine end has a 6 pin connector
- Helm end has both 6 & 3 pin connector for panel indicator lights on key switch panel and/or PGM-FI indicator light display for digital gauges.
- Includes sealing caps provided for unused Connector

Application: BF40D to BF225



9 Wire panel indicator harness (7.6M)

32185-ZY6-025AH

- Engine end has a 6 pin connector
- Helm end has both 6 & 3 pin connector for panel indicator lights on key switch panel and/or PGM-FI indicator light display for digital gauges.
- Includes sealing caps provided for unused Connector

Application: BF40D to BF225



9 Wire panel indicator harness extension

200

32185-ZY6-004AH

- Fits: 1.25M (4 foot) extension harness to extend the 6 pin and 3 pin connection at the helm end of the following harnesses:
 - 20 wire main engine harness
 - 23 wire universal main engine harness
 - 9 wire panel indicator harness



Pre Rigging

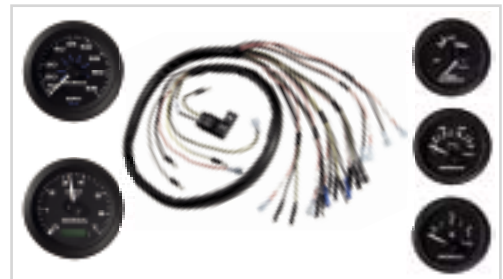


Gauge kits

EU 5 gauge kit - black - with resistance to fog

06365-ZW5-00AHE

- Kit contains:
 - Instrument set 06304-ZW5-000ZA
 - Instrument harness 32200-ZW7_000AH
- Includes an EU fuel gauge operating on 10 Ω (empty) to 180 Ω (full) scale
Fog resistant



Application: BF25 to BF225

EU 5 gauge kit - white - with resistance to fog

06365-ZW5-00BHE

- Kit contains:
 - Instrument set 06304-ZW5-000ZB
 - Instrument harness 32200-ZW7-000AH
- Includes an EU fuel gauge operating on 10 Ω (empty) to 180 Ω (full) scale
Fog resistant

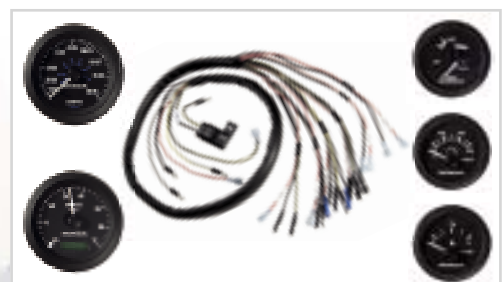


Application: BF25 to BF225

US 5 gauge kit - black - with resistance to fog

06360-ZW5-00AHE

- Kit contains:
 - Instrument set 06303-ZW5-000ZA
 - Instrument harness 32200-ZW7-000AH
- Includes a US fuel gauge operating on 240 Ω (empty) to 33 Ω (full) scale

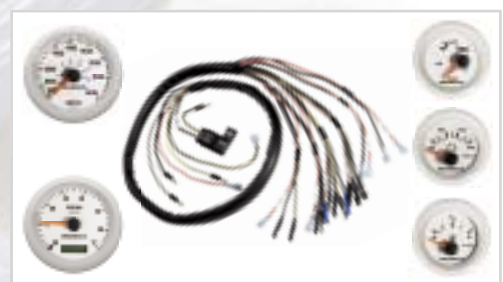


Application: BF25 to BF225

US 5 gauge kit - white - with resistance to fog

06360-ZW5-00BHE

- Kit contains:
 - Instrument set 06303-ZW5-000ZB
 - Instrument harness 32200-ZW7-000AH
- Includes a US fuel gauge operating on 240 Ω (empty) to 33 Ω (full) scale



Application: BF25 to BF225

Pre Rigging



Gauge kits

US 5 gauge kit -Charcoal - with resistance to fog

06360-ZW5-003SK

- Kit contains:
 - Instrument set 06300-ZW5-003SK
 - Volt meter 37450-ZW5-003SK
 - Instrument harness 32200-ZW7-000AH
- Includes a US fuel gauge operating on 240 Ω (empty) to 33 Ω (full) scale



Application: BF25 to BF225

3 Gauge kit - black - with resistance to fog

06340-ZW5-00AHE

- Kit contains:
 - Tachometer 37253-ZW5-000ZA
 - Trim meter 37263-ZW5-000ZA
 - Voltmeter 37453-ZW5-000ZA
 - Instrument harness 32200-ZW7-000AH



Application: BF25 to BF225

3 Gauge kit - white - with resistance to fog

06340-ZW5-00BHE

- Kit contains:
 - Tachometer 37253-ZW5-000ZB
 - Trim meter 37263-ZW5-000ZB
 - Voltmeter 37453-ZW5-000ZB
 - Instrument harness 32200-ZW7-000AH

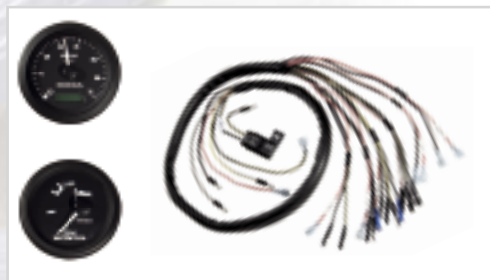


Application: BF25 to BF225

2 Gauge kit - black - with resistance to fog

06333-ZW5-00AHE

- Kit contains:
 - Tachometer 37253-ZW5-000ZA
 - Trim meter 37263-ZW5-000ZA
 - Instrument harness 32200-ZW7-000AH



Application: BF25 to BF225

Pre Rigging



Gauge kits

2 Gauge kit - white - with resistance to fog

06333-ZW5-00BHE

- Kit contains:
 - Tachometer 37253-ZW5-000ZB
 - Trim meter 37263-ZW5-000ZB
 - Instrument harness 32200-ZW7-000AH



Application: BF25 to BF225

2 gauge kit - Charcoal Grey - With resistance to fog

06333-ZW5-003SK

- Kit contains:
 - Tachometer 37250-ZW5-003SK
 - Trim meter 37260-ZW5-003SK
 - Instrument harness 32200-ZW7-000AH



Application: BF25 to BF225

Deluxe gauge kit

06333-ZW5-000HE

- Kit contains:
 - Tachometer 37250-ZV7-912
 - Trim meter 37260-ZV5-821
 - Instrument harness 32540-ZV5-911
- Suitable for use with Rudder meter (BF60A / BFP60A)



*Application: BF25 / BF30
BF60 to BF225*

Deluxe gauge kit

06351-ZW5-00AHE

- Kit contains:
 - Tachometer 06375-ZW5-U11
 - Trim meter 06372-ZW5-U11
 - Instrument harness A 32540-ZV5-911
- Suitable for use with Rudder meter (BF60A / BFP60A)



Application: BF25 to BF225

Pre Rigging



Gauge kits

Deluxe gauge kit

200

/ 200

06351-ZW5-00BHE

- Kit contains:
 - Tachometer 06375-ZW5-U01
 - Trim meter 06372-ZW5-U01
 - Instrument harness A 32540-ZV5-911
- Suitable for use with Rudder meter (BF60A / BFP60A)

Application: BF25 to BF225



Pre Rigging



Notes

A series of horizontal dotted lines for taking notes, overlaid on a large, faded background image of a boat on the water.